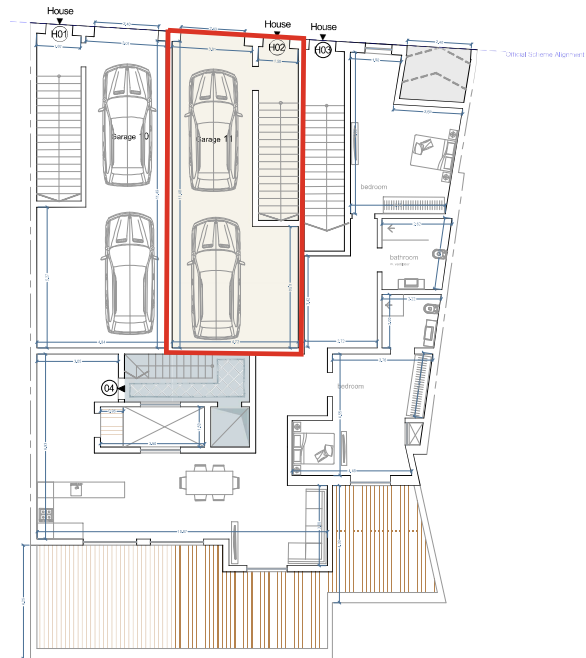
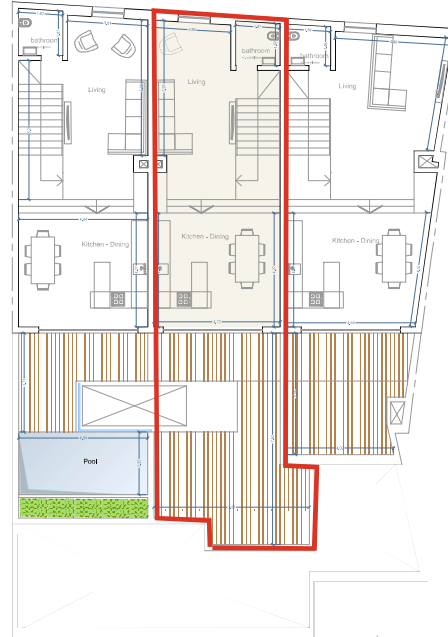


# RESIDENTIAL DEVELOPMENT, ZEBBUG, GOZO

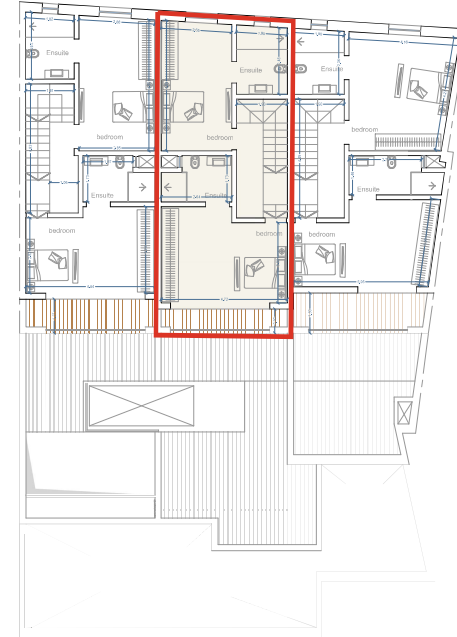
**Proposed Level 0**  
Scale 1:100



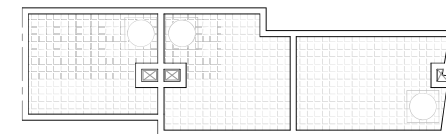
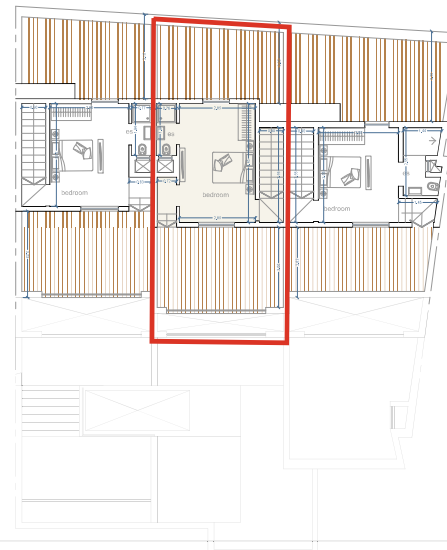
**Proposed Level 1**  
Scale 1:100



**Proposed Level 2**  
Scale 1:100



**Proposed Third Floor Level**  
Scale 1:100



Residence ID	No of Beds	Internal Flr Area	External Area	Gross Flr Area
APT - 04	2	130,60m <sup>2</sup>	61,70m <sup>2</sup>	192,30m <sup>2</sup>
Residence ID	No of Beds	Internal Flr Area	External Area	Gross Flr Area
House 01+G10	3	204,00m <sup>2</sup>	72,80m <sup>2</sup>	276,80m <sup>2</sup>
House 02+G11	3	194,70m <sup>2</sup>	73,20m <sup>2</sup>	267,90m <sup>2</sup>
House 03	3	161,80m <sup>2</sup>	66,40m <sup>2</sup>	228,30m <sup>2</sup>