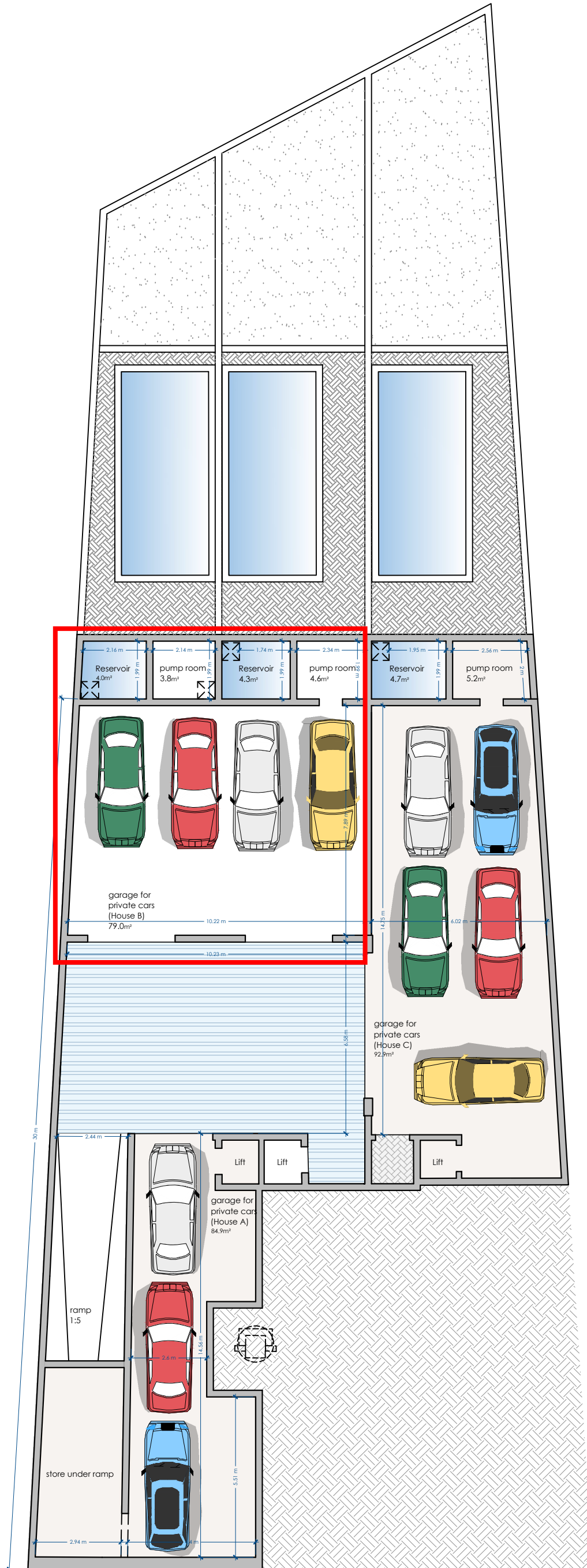
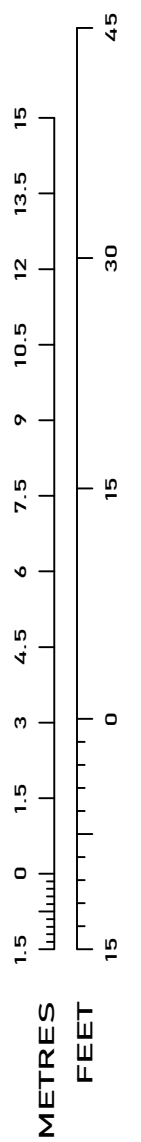


| UNIT | INTERNAL | EXTERNAL | TOTAL |
|---------|----------|----------|----------|
| HOUSE A | 99 sqm | / | 99 sqm |
| HOUSE B | 96.3 sqm | / | 96.3 sqm |
| HOUSE C | 114 sqm | 3.4 sqm | 114 sqm |

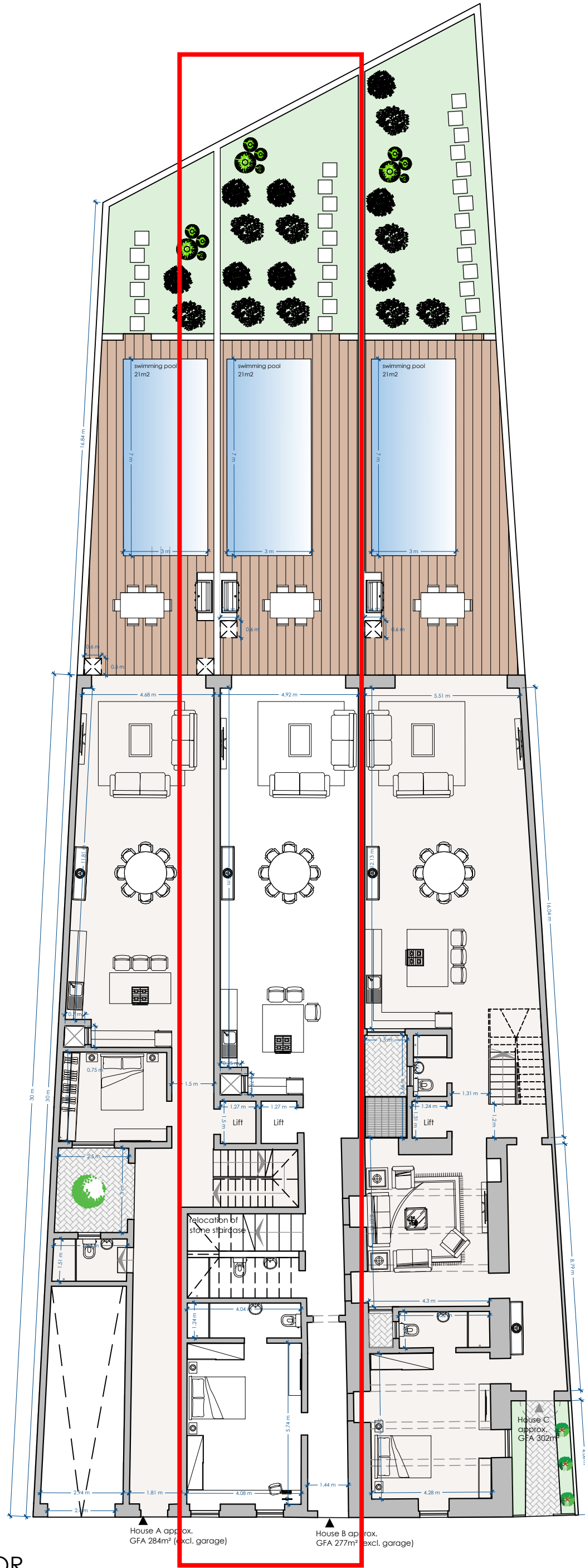


BASEMENT LEVEL
PROPOSED

SCALE 1:150



| UNIT | INTERNAL | EXTERNAL | TOTAL |
|---------|-----------|-----------|-----------|
| HOUSE A | 131.8 sqm | 85.6 sqm | 217.4 sqm |
| HOUSE B | 151.7 sqm | 103.9 sqm | 255.6 sqm |
| HOUSE C | 189.9 sqm | 126.8 sqm | 316.7 sqm |



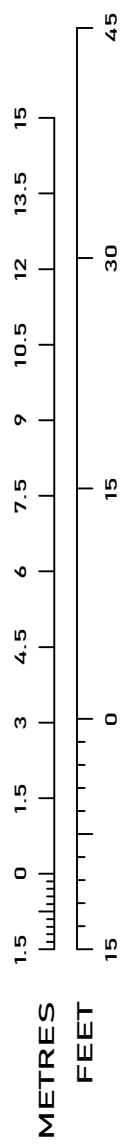
GROUND FLOOR
PROPOSED

SCALE 1:150

House A approx.
GFA 284m² (excl. garage)

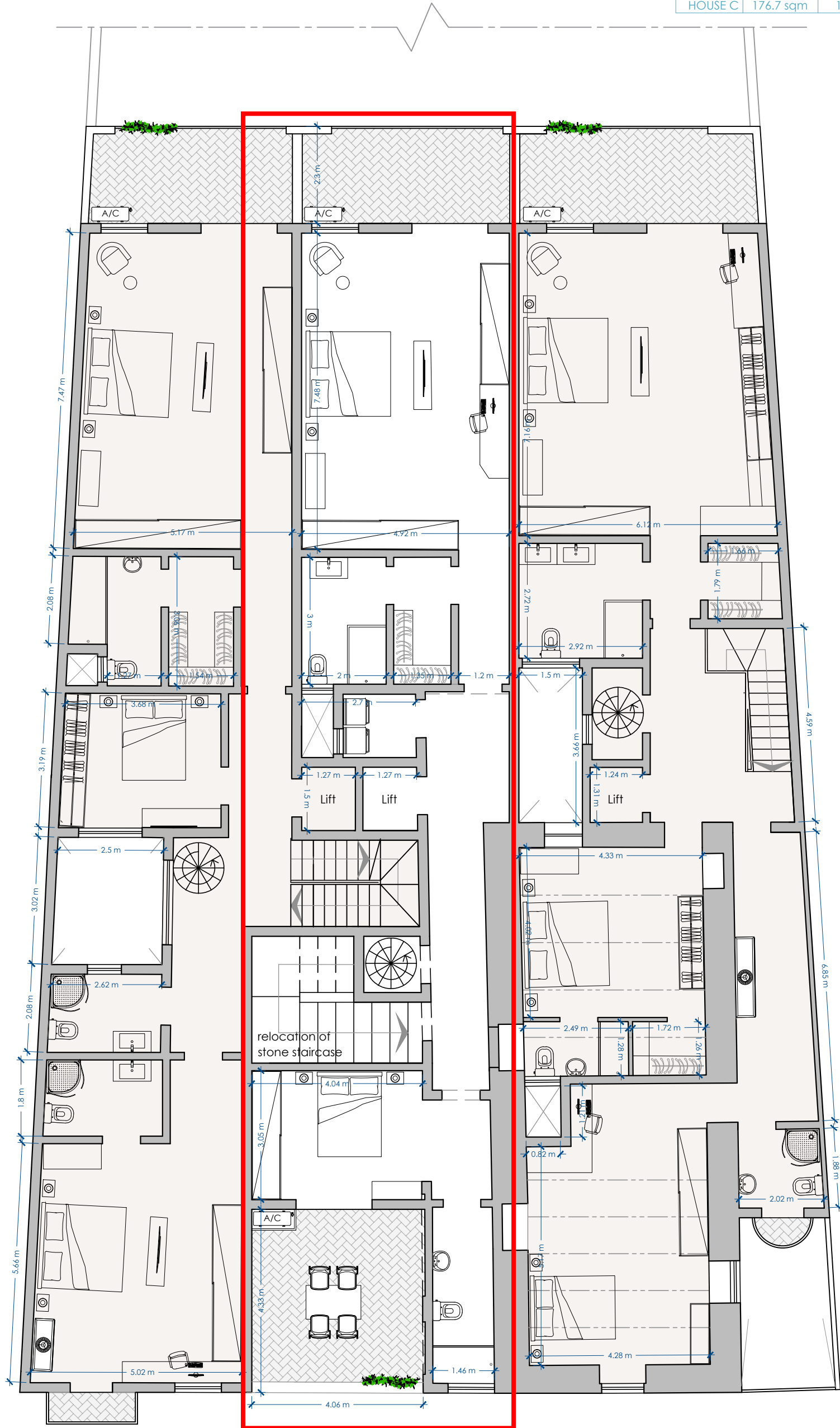
House B approx.
GFA 277m² (excl. garage)

House C
approx.
GFA 302m²



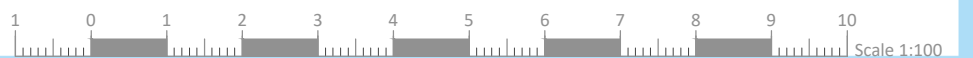
SCALE 1:150

| UNIT | INTERNAL | EXTERNAL | TOTAL |
|---------|-----------|----------|-----------|
| HOUSE A | 145.9 sqm | 13 sqm | 158.9 sqm |
| HOUSE B | 121.6 sqm | 30 sqm | 151.6 sqm |
| HOUSE C | 176.7 sqm | 14 sqm | 190.7 sqm |

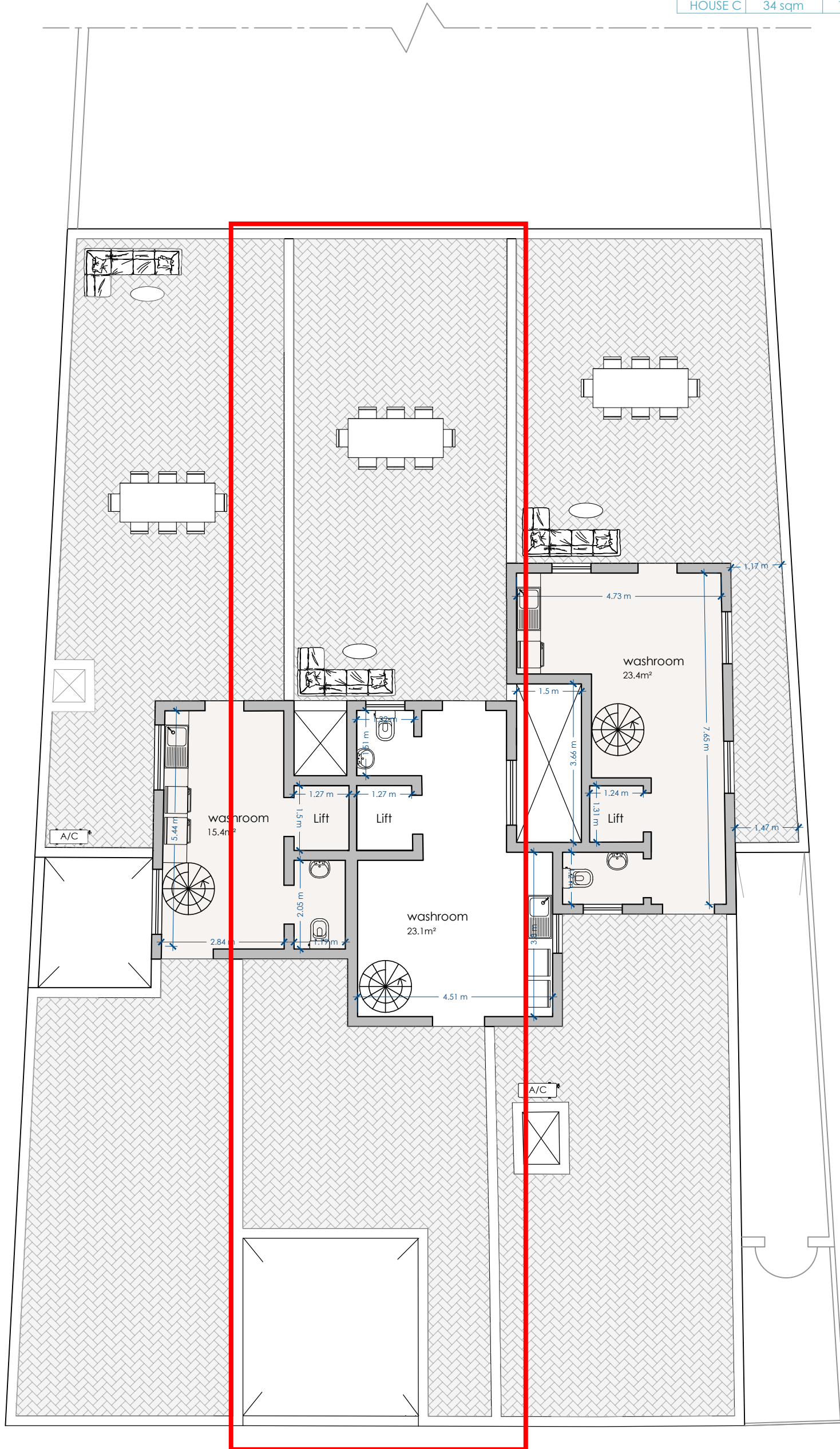


FIRST FLOOR
PROPOSED

SCALE 1:100



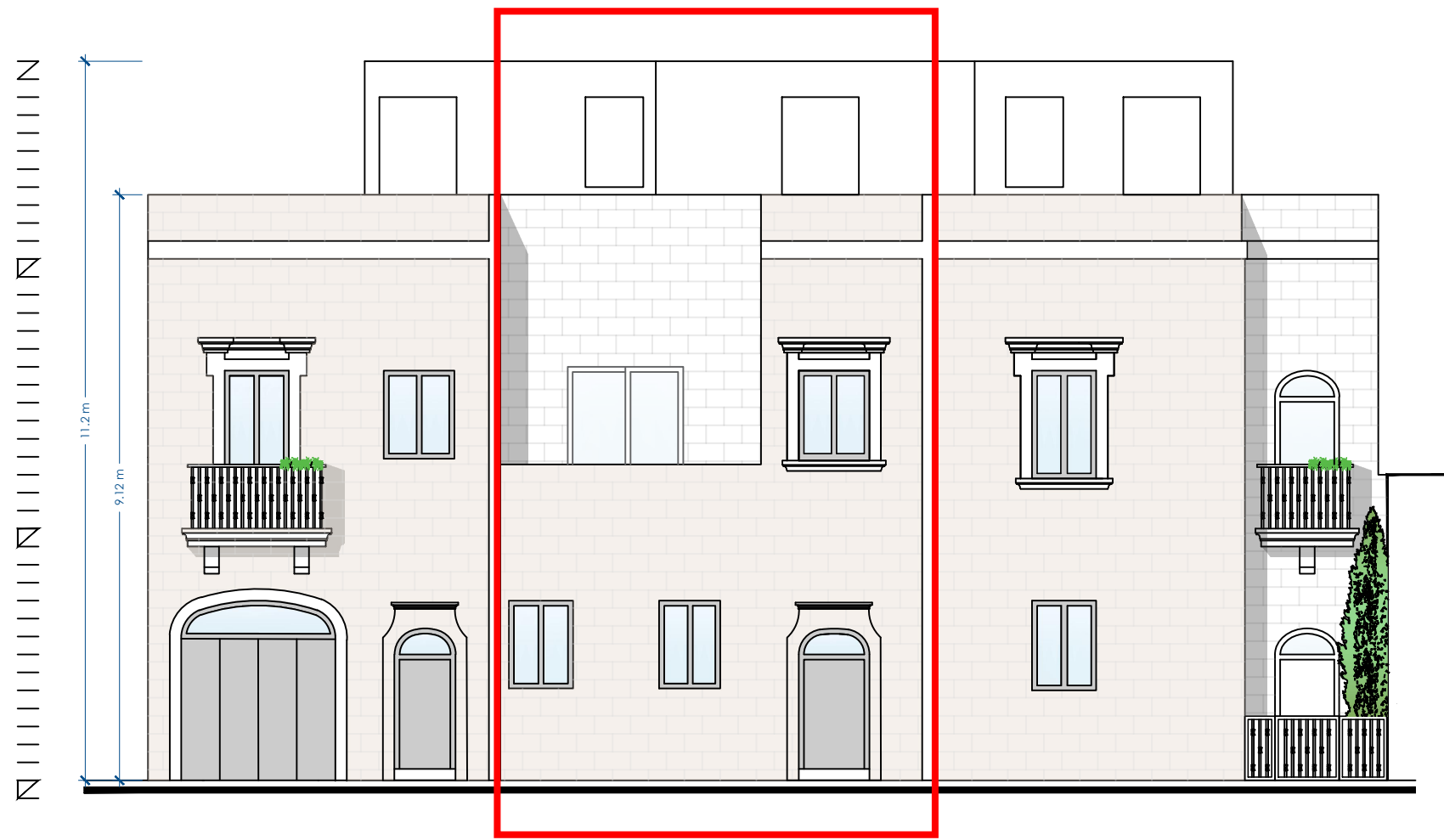
| UNIT | INTERNAL | EXTERNAL | TOTAL |
|---------|----------|-----------|-----------|
| HOUSE A | 25.1 sqm | 145.9 sqm | 171 sqm |
| HOUSE B | 32.9 sqm | 96.5 sqm | 129.4 sqm |
| HOUSE C | 34 sqm | 120 sqm | 154 sqm |



SECOND FLOOR
PROPOSED

SCALE 1:100





FACADE MATERIALS:

1. Franka stone unpainted;
2. timber aperture painted as per DC 2015 G52;
3. Wrought iron railings painted dark grey.

FRONT ELEVATION

PROPOSED

SCALE 1:100

