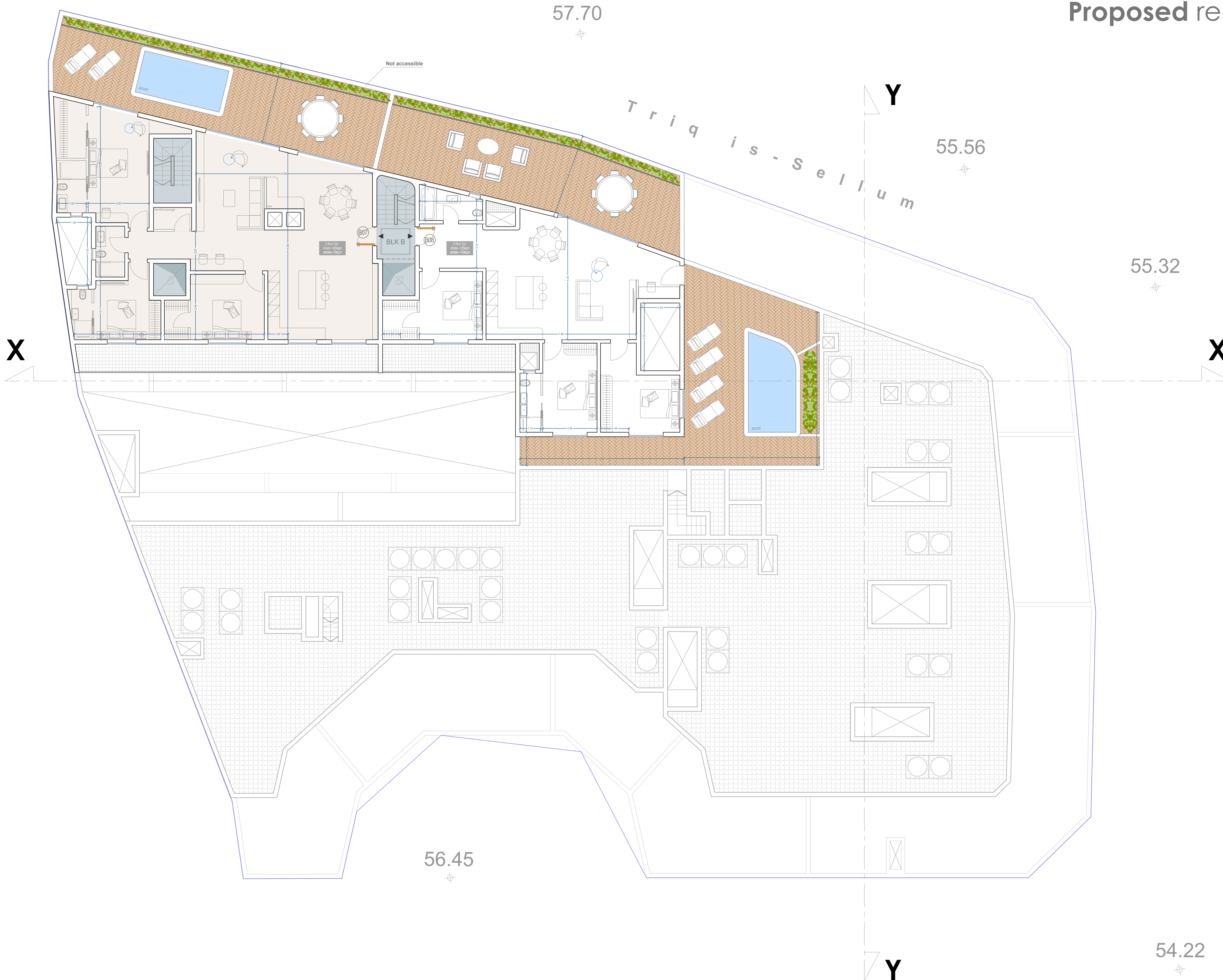


Proposed recessed/ roof level

2X - 3 bedroom penthouses



notes for CRPD :

- external paving material is to be non slip and flush mounted
- max threshold not to exceed 15mm with a chamfered edge
- refuge area provided within the stairwell core
- minimum width of external doors / fire doors to be not less than 1.1m
- minimum width of internal doors to be not less than 1m
- internal corridors to be not less than 1.2m

SITE: Triq is-Sellum, Victoria Gozo			
TITLE:			
SCALE AT: 1:100	DATE:	DRAWN:	CHECKED:
PROJECT NO:	DRAWING NO:	REVISION:	