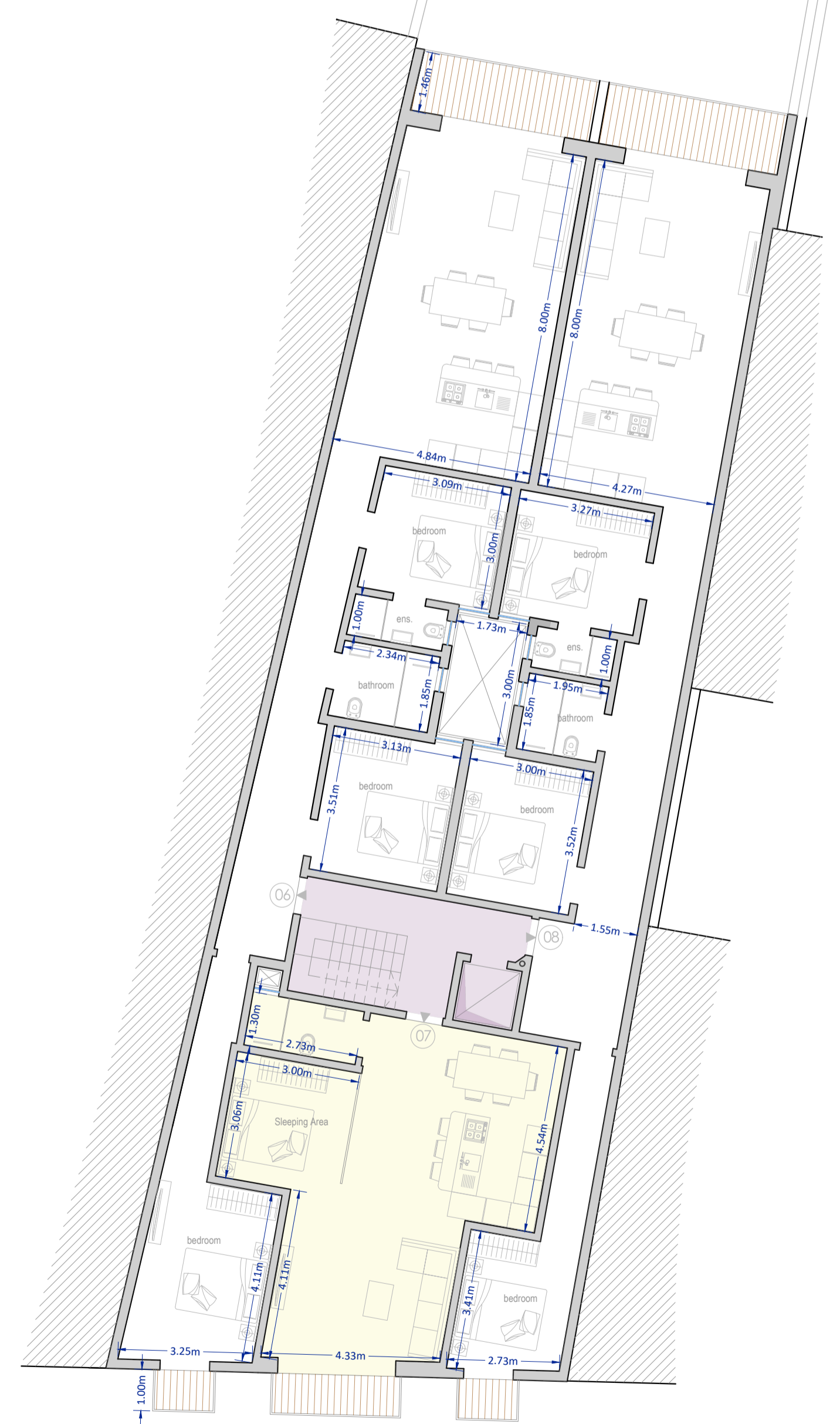
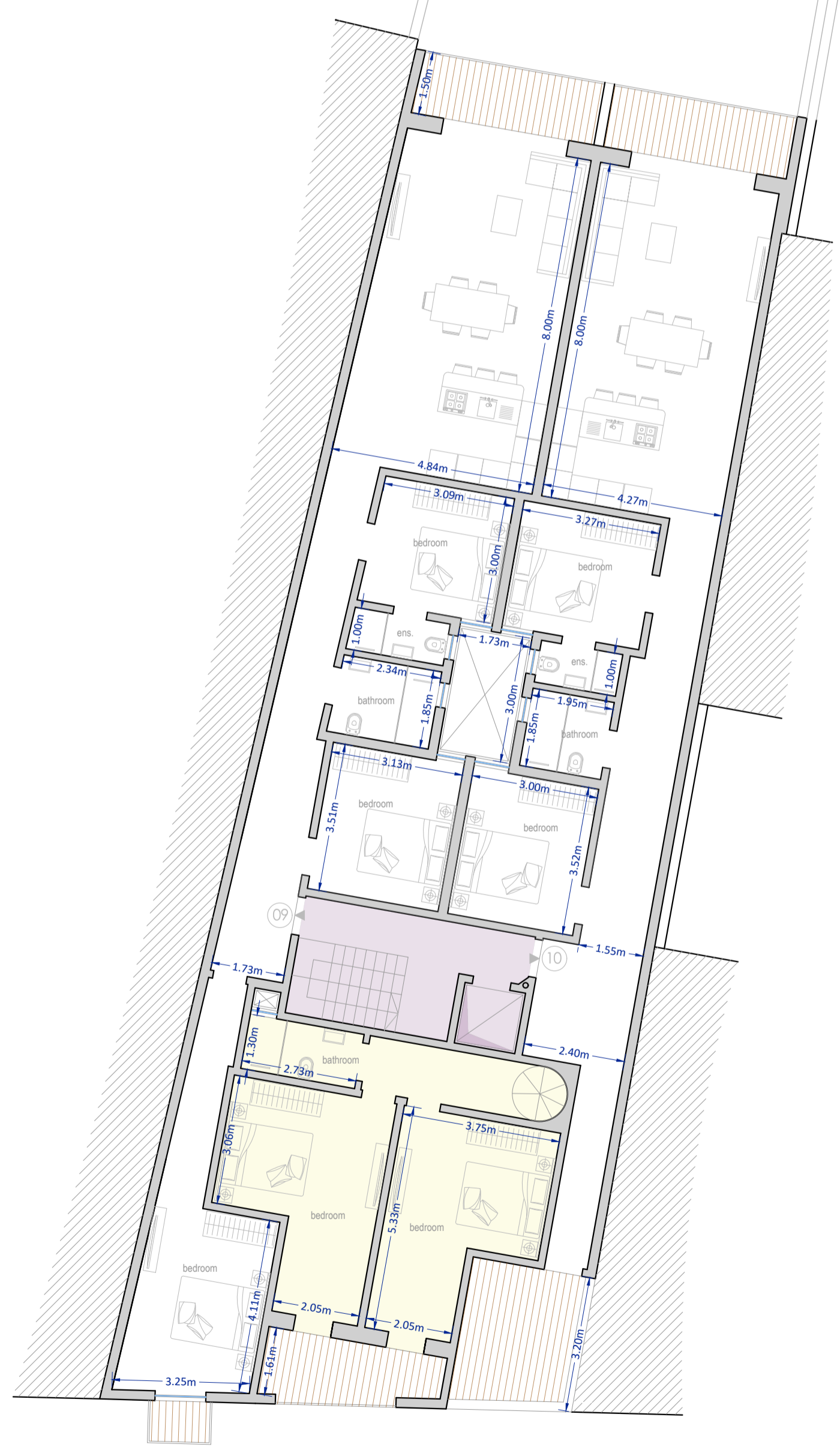


Residence ID	No of Bed	Internal Area	External Area	Total GFA <small>Gross Floor Area</small>
Apt 06	3	117.70m ²	8.60m ²	126.30m ²
Apt 07	1	55.85m ²	3.15m ²	59.00m ²
Apt 08	3	111.90m ²	8.60m ²	120.50m ²
Apt 09	3	117.70m ²	8.60m ²	126.30m ²
Apt 10	2	101.90m ²	17.10m ²	119.00m ²
Apt 11	3	109.40m ²	19.20m ²	128.60m ²
Apt 12	2	83.40m ²	21.40m ²	104.80m ²
Apt 13	2	101.30m ²	21.00m ²	122.30m ²

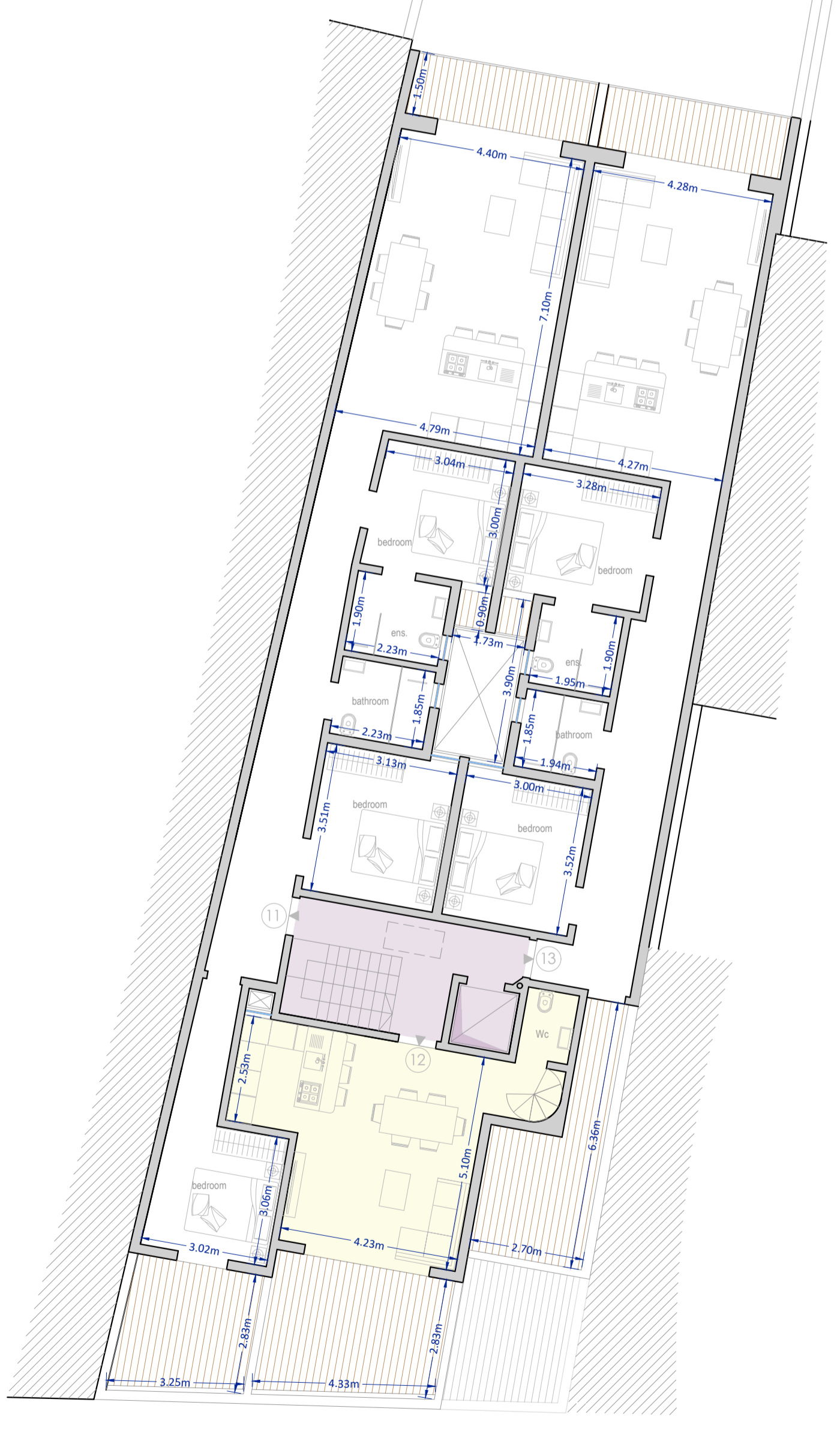
REFERENCE	
PERIT	Alex Bigeni - Gozo
Int. Arch. Design	Mario B. Petracaro - Gozo
Referent Alteration	Mario B. Petracaro - Gozo
Revision	17-02-2022



Proposed Second Floor Level
scale 1:100



Proposed Third Floor Level
scale 1:100



Proposed Receded Floor Level
scale 1:100